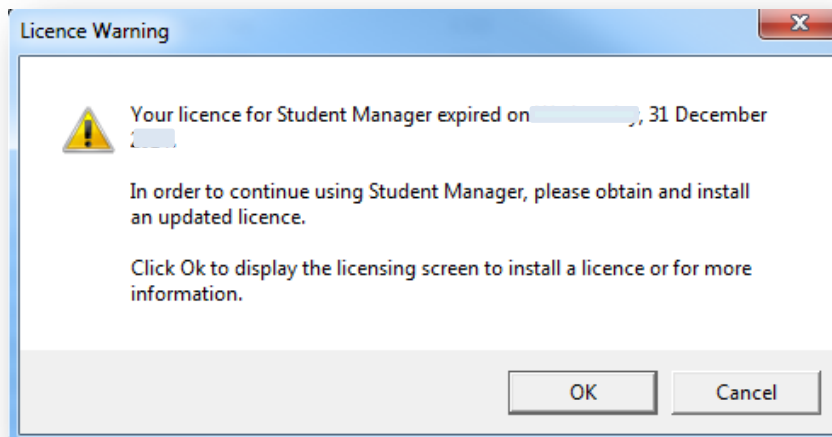


The MUSAC Classic licence is valid from 1 January and expires on 31 December; once the annual licence fee has been paid, the licence file in the software can be updated.

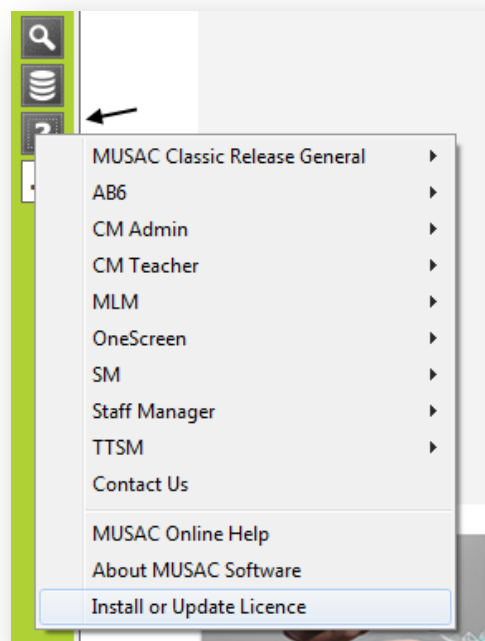
An expiry message will display when opening any application in the MUSAC shell. If the update process has not been completed, it will appear regardless of whether the annual licence fee has been paid or not.



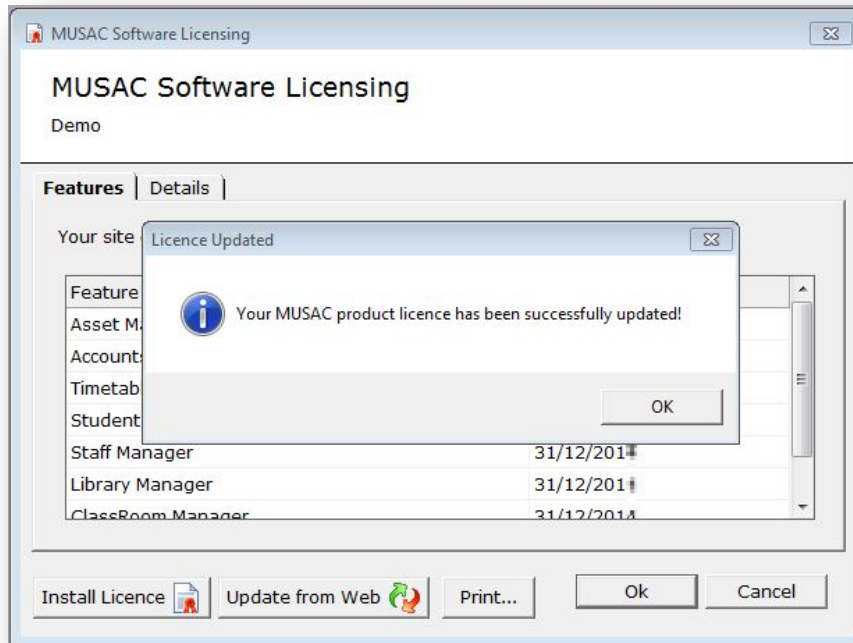
### To update the licence before 31 December

If you have paid your annual licence fee, and your payment has been processed, the licence file can be updated at any time:

1. From the sidebar - click on the 'question mark' and click the last menu item "Install or Update Licence".



2. The MUSAC licensing screen will display the licence currently held in the software.  
NB: the licence expiry dates are displayed next to each software module.
3. Click 'Update from Web'. The licence will be automatically updated.
4. Expiry dates for the new licensing period will display. If they haven't updated, your payment hasn't been received and/or processed by us.
5. Click 'OK' to continue using the software.



### To update the licence on or after 31 December

1. Click "OK" on the licence warning message and the MUSAC software licensing screen will display.
2. Follow steps 2 to 5 above to update the licence.

[Product Specialists](#)

0800 600 159 option 2

[www.musac.co.nz](http://www.musac.co.nz)

0800 600 159

[www.solutionsandservices.co.nz](http://www.solutionsandservices.co.nz)

03 331 6210



t. 0800 600 159  
f. 0800 500 159  
support@musac.co.nz