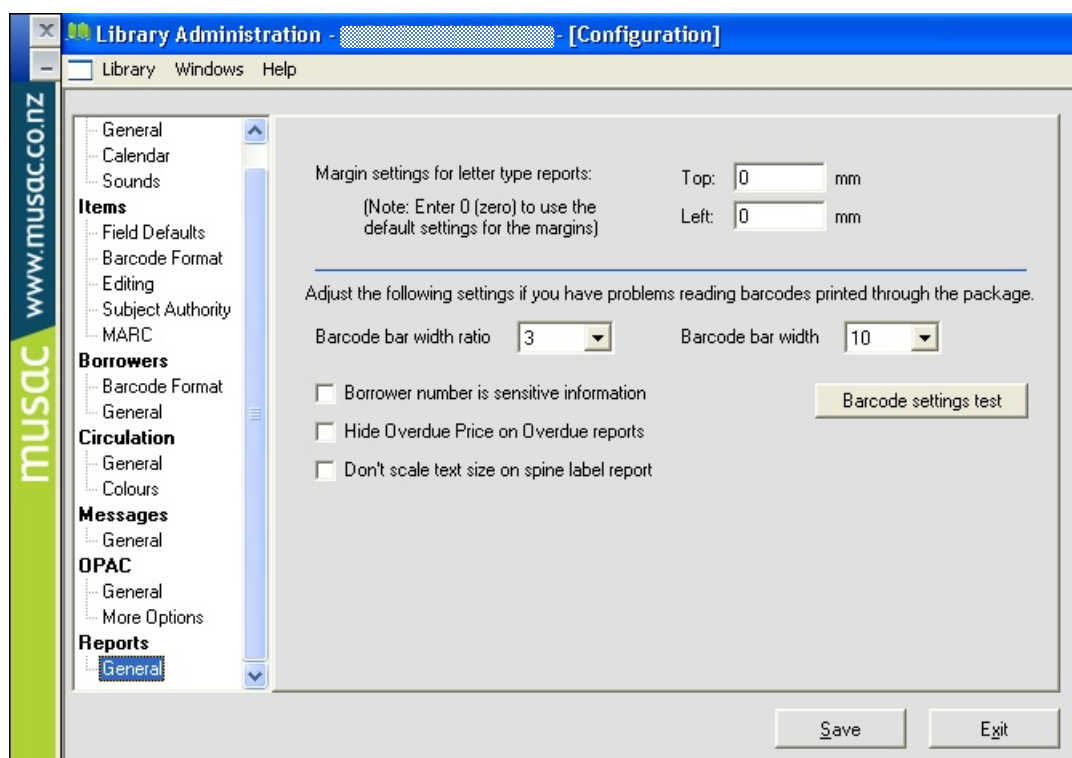


If the scanner you're using has difficulty reading your barcodes, we suggest the following:

- 1 In Library Manager go to Configuration > Configuration > Reports > General
- 2 Click 'Barcode Settings Test'
- 3 Enter one of your current barcode numbers
- 4 Click Ok.

This will generate a sheet with a range of barcode widths and ratios as well as instructions on how to correctly set your scanner.



Other factors which can affect how well barcodes read are the printer and paper type you use.

- A laser printer is the best option as it uses a dry format and will give a very sharp printout for the scanner to read
- Inkjet printers set on a high resolution and a higher quality paper (100gm or bright white) should be used to get the best results as the wet ink can 'bleed' through the fibre in standard paper resulting in a blurry barcode.

MUSAC has a barcode printing service. These barcodes are laminated and self-adhesive, ready for sticking onto your books. Order forms are available for download from www.musac.co.nz.

[Product Specialists](http://www.musac.co.nz)
training@musac.co.nz

www.musac.co.nz
0800 600 159

www.solutionsandservices.co.nz
03 331 6210